

ContactMap ! for dummies

Google Map component for Joomla!1.5

ContactMap!3.x for Joomla!1.5



This document and the cover illustration are published under free license

Creative Commons-BY-SA

<http://creativecommons.org/licenses/by-sa/2.0/fr/deed.fr>

BY : Paternity. Laurent Jarry alias LJ01,
English version by Ségolène Bunel and Greg Tastour

SA : Commercial Share Alike. If you alter, transform, or build upon this work,
you may distribute the resulting work only under
a license identical to this one. In addition, any reuse or distribution, you must
make clear to others the license terms of provision of creation.
Each of these conditions can be waived if you get permission from rightholder.

Version ContactMap!3.8 for dummies – october 2010

Foreword

From the component creator

The purpose of this component is to allow an easy integration of a map "Google Map" into Joomla! 1.5 contacts form. In fact, it collects all your Joomla contacts and proposes you a form to integrates Google Map.

This component is an uncluttered version of GmapFP, in which there is only the contacts form left ...or almost!

Official website <http://www.gmapfp.org/>

GNU GPL license of the component <http://www.gnu.org/licenses/gpl.html>

ContactMap is a freeware under GNU GPL license. You will find more details of rules for the use of the license in following the above link.

On no account, a commercial company can sell a ContactMap license, or all or any of the source code. On the other hand a commercial company has completely the right to sell a service based on ContactMap (Installation, configuration, formation...) and to modify the code for customer needs, or to sell extensions (modules, templates) specifically developed for ContactMap.

Get a Google Maps API key

On this version 3.0, Google Maps API key isn't necessary, the component use the last version of « API Google Map V3 » and their new feature are described in the following sections.

Foreword

Basic principles

Installation and update

1. Component installation
2. Update
3. Language installation

Use of the component

4. Home ContactMap
5. General parameters
6. Categories creation
7. Contacts creation
8. Menus creation
9. Markers creation
10. Css modification

Elements of the component in Frontend

11. The form
12. The itinerary
13. GeoXml
14. Printing

Conclusion

Native Compatibilities

Joomla : 1.5 + SEF



language : FR et EN



server : PHP 4 et 6



components : GMapFP

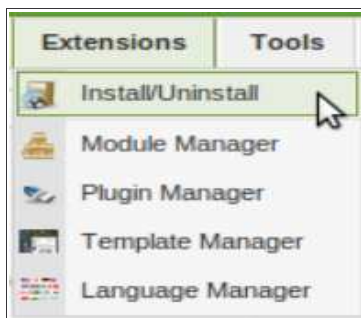


Installation and update

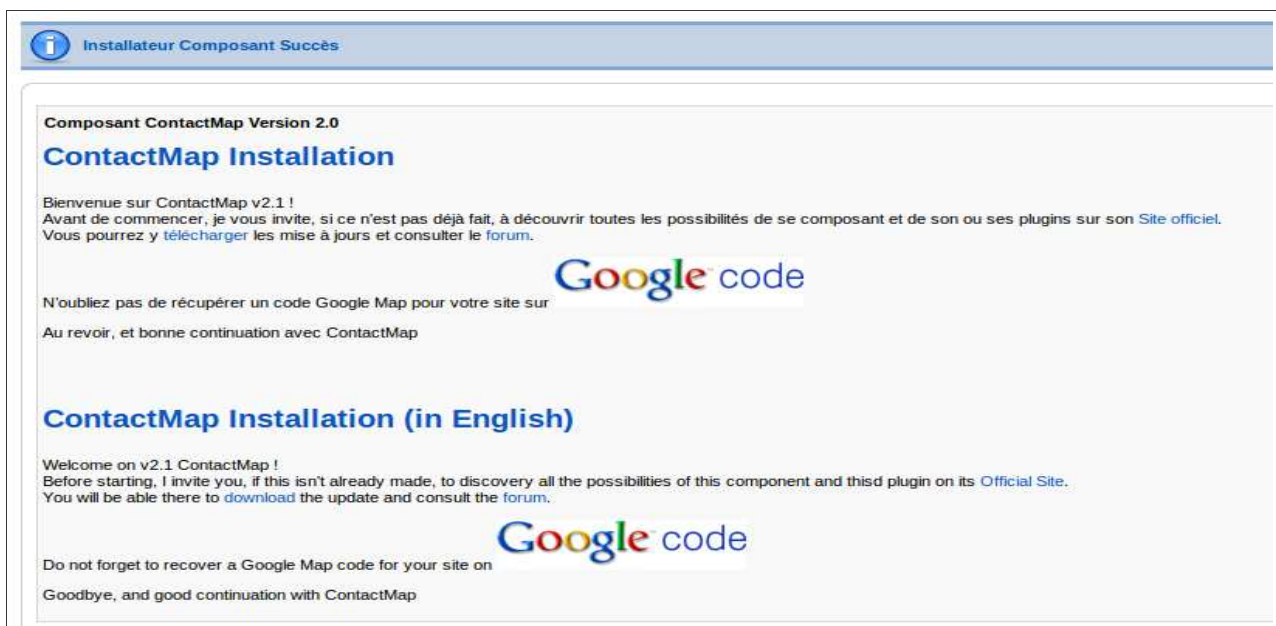
1. Component installation

To do so, you need first to download the last version of the **ContactMap component** (this stage is important, to allow you to have the most complete and also most optimized version).

Then, you have to install the component like any Joomla! 1.5 component. In Joomla administrative part, click on the menu "Extensions" then "Install / uninstall".



Click on "Choose a file ". Select the .zip file you just downloaded. Confirm your selection and click on "Upload file and Installation ". A message indicating that you are on the right track appears: " Success! "



2. Update

ContactMap is a recent component which permanently evolves. It's the reason, there are regular updates to be made if you wish to exploit all developed features.

To update, proceed like a new installation. This update will be made without remove your data. Your .css file, your contacts and their data will be not deleted.

3. Language installation



ContactMap is native Joomla component, in French and English by default. You can find translation files in the forum section of the official website.

ContactMap uses 3 files which must be downloaded on your website, via a FTP, in the places indicated below. These files are made for GMapFP component but are also valid for ContactMap. You just need to change GMapFP to ContactMap in the file's name.

[/administrator/language/es-ES/es-ES.com_ContactMap.ini](#)

containing the back end translation

[/administrator/language/es-ES/es-ES.com_ContactMap.menu.ini](#)

containing the back end component menu

[/language/es-ES/es-ES.com_ContactMap.ini](#)

containing the front-end translation

Additional languages available :



Use of the component

4. Home ContactMap

Now, you have a new component available in the list of your Joomla! 1.5 components.



In the twinkling of an eye, you can control all the features of ContactMap, as well as the useful links, like the forum of the official website where you will certainly find the answers to your questions.

5. General parameters

All the following parameter settings have a tooltip to inform you. Those **basic parameters** will be selected or not, **by default in all the Contact forms**. Nevertheless, each Contact form can be set independently from parameter settings by default, that is to say that all these parameters will be also available on each form that you will create in using a menu.

Thus, the first stage is to settle a few **parameters**. When you click, the window opens. On top right, you'll find **SAVE** button. it is important than when you go into parameter window, it disappears, so you could be tempted to exit of this window straight away ... without backing up.

These parameters are presented here according to their function.

➤ Parameters of the main map's display

The screenshot shows a window titled 'Defining the parameters of the map'. It contains several settings: 'Height of the map (px)' set to 500, 'Automatic centering' with radio buttons for 'No' and 'Yes' (selected), a map preview showing a location in Ingol, 'Zoom level of the main map' set to 14, 'Zoom of map lightbox' with a dropdown menu, 'Zoom of map lightbox' with a dropdown menu, 'Width of the ContactMap bubble' set to 400, and 'Cut caesura of the message' set to 200. The map preview shows a location in Ingol with a red pin and a yellow line indicating a route.

Dimension of the map's display

Allow you to centre the map during the creation places process.

Lightbox is the window which will appear with the click on the marker of a place. In this window, you can find the main descriptive elements of the contact.

This display proposes 4 parameter settings. We will focus on those parameter settings during the creation of a contact in section 7.

Caesura = size of the message displayed in the lightbox.

➤ Display options around and in the map

Choice the map's options	
Choosing the type of marker	<input checked="" type="radio"/> Marker <input type="radio"/> Contact picture
View direction	<input type="radio"/> Hide <input checked="" type="radio"/> Show
Traffic	<input type="radio"/> Hide <input checked="" type="radio"/> Show
Street view	<input type="radio"/> Hide <input checked="" type="radio"/> Show
Height of StreetView (px)	<input type="text" value="300"/>
View map	<input type="radio"/> Hide <input checked="" type="radio"/> Show
View satellite	<input type="radio"/> Hide <input checked="" type="radio"/> Show
View hybrid	<input type="radio"/> Hide <input checked="" type="radio"/> Show
Viewn terrain	<input type="radio"/> Hide <input checked="" type="radio"/> Show
Dropdown menu	<input type="radio"/> No <input checked="" type="radio"/> Yes
Display map default	<input type="text" value="View hybrid"/>
Bar zoom level and navigation	<input type="radio"/> Hide <input checked="" type="radio"/> Show
Scale indication	<input type="radio"/> Hide <input checked="" type="radio"/> Show
Mouse wheel	<input type="radio"/> No <input checked="" type="radio"/> Yes

➤ Display parameters of the contact form

Choice the form's options	
Display the schedules and prices button	<input type="radio"/> Hide <input checked="" type="radio"/> Show
Height image display (px)	<input type="text" value="100"/>
Security image	<input type="radio"/> Hide <input checked="" type="radio"/> Show

➤ Others display parameters

Other	
url of GeoXml file	<input type="text"/>
Display the Copyright	<input type="radio"/> Hide <input checked="" type="radio"/> Show

Copyright can be hidden but please, think to those who develop free tools. More people will participate, better the quality of the tool will be.

6. Category creation

Next stage is to create categories which will organize your contacts! In fact, **ContactMap** use Contact and Categories of Joomla, so if you use **Contact component of Joomla**, Categories et Contacts are reused by ContactMap component.

The creation of a contact is made at its minimum, with a Name and a Category. The categories you have in your Joomla contacts will be reused. If you create one in ContactMap component, it will also be visible in Contact component of Joomla.



Categories creation is only by Contact component of Joomla, so Categories icon you referring directly, not for Contact creation who have a special form integrated the Google Map.

7. Contact creation

➤ address and map

Here you create one **contact**, a relatively intuitive section. A name, an alias (which will be automatic if you don't fill in it, without

The image you download may serve as a marker.

Each function is described in **Elements in frontend**, further on

The **Traffic** display will appear in the main map. It is available for France and England,

The **Street view** display will appear on main map.

Presence absence of different types of map display.

Each of these functions is described in the **Elements frontend** lowest.

Schedules and prices will only appear if a capture is made in the corresponding fields of your contact creation.

Hight image in lightbox.

Security captcha.

For the **GeoXml** file, see the «GeoXml» part.

Refer to the GMapFP documentation for to have more accuracy



Details	
Name:	<input type="text"/>
Alias:	<input type="text"/>
Category:	- Select a Category - ▾
Linked to User:	- No User - ▾
Contact's Position:	<input type="text"/>
Address:	<input type="text"/>
Postal code:	<input type="text"/>
City:	<input type="text"/>
State:	<input type="text"/>
Country:	<input type="text"/>
Phone:	<input type="text"/>
Phone:	<input type="text"/>
Fax:	<input type="text"/>
@ Email:	<input type="text"/>
Web Site:	<input type="text"/>

Click on 'Apply' for update this address:


Latitude - Longitude - Zoom:

Find

Plan Satellite Mixte


Move the marker on the map for find coordinates:

Données cartographiques ©2010 Tele Atlas - Conditions d'utilisation

Choice of presentation image:  

➤ *Descriptive space*

7/13

When you enter the schedule and price, this icon will appear in the  form.

The choice of the marker will indicate the position of your place on the map (see the [markers](#) section for the addition of a new one).



➤ *Display of the lightbox with a click on the marker*

Here, there are four sort of display which are proposed for a contact, when you click on the marker.

Display type from Google Map:

☒ Display all

☐ Display image + detail

☐ Display image + message

☐ Display only the title

Display all	<div>Ibrahim ALANGA rue du kori Ingali Tchirozérine Niger Association pour un développement durable (Assainissement, eau, lutte contre la désertification).</div>	Image + message	<div>Ibrahim ALANGA Association pour un développement durable (Assainissement, eau, lutte contre la désertification).</div>
Image + detail	<div>Ibrahim ALANGA rue du kori Ingali Tchirozérine Niger</div>	Display only the title	<div>Ibrahim ALANGA</div>

➤ *Link a contact to an article or another URL*

Enter a personal link in your article (this link must start with www. or http:// or index.php):

Selection d'un article:


Select a icon for put it in the article detail.:

Icon label:

When you select at the same time an article and an icon, the latter will appear in description, with the Schedule and Printing icons.

The icons provided in Joomla will be enough most of time,yet, you could add some via FTP in /pictures/ stories.

The title of the icon will appear in tool tip.

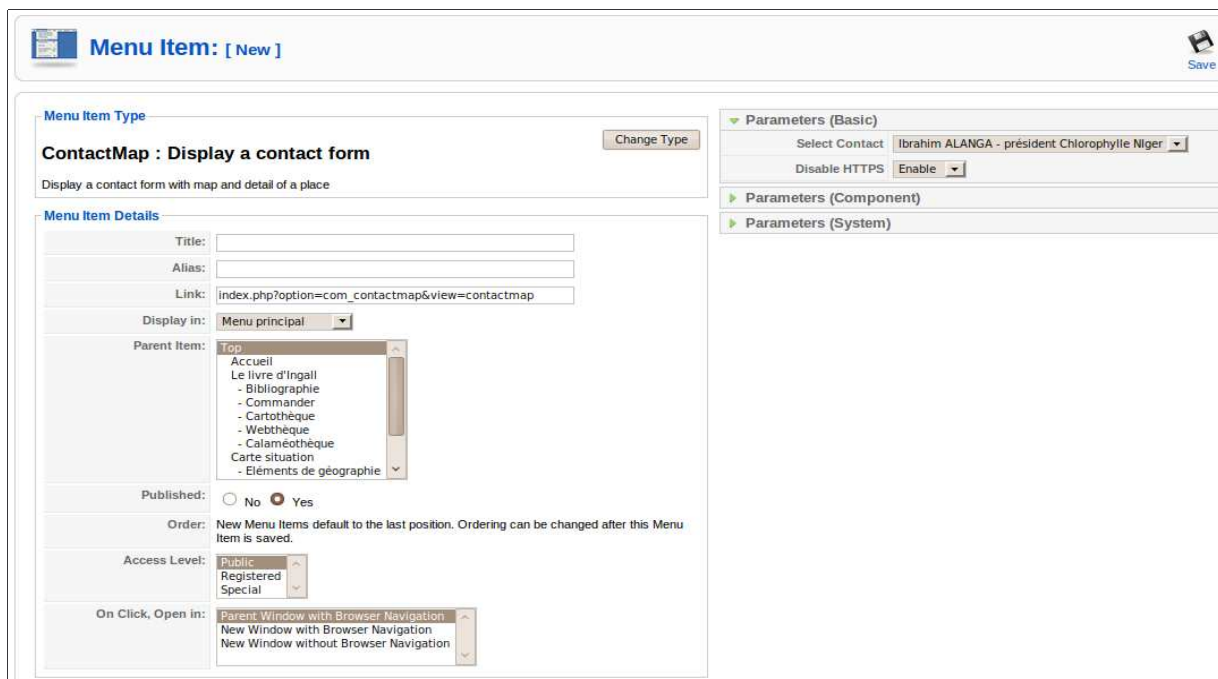
 Of course, don't forget to **Publish** your contact !

8. Menu ContactMap creation



To create a menu for a contact, you just need to go in the management section of your Joomla!1.5 menu and to choose ContactMap. Many sort of menu are available.

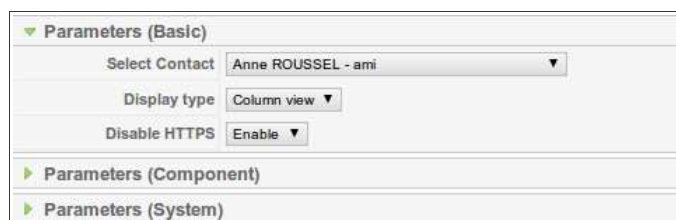
You will have to name your menu and assign to it all the main parameters. Here, you can refer to «Joomla! 1.5 for dummies».



On the right you can find three categories of parameters :

➤ *Parameters – Basics*

where you'll find the selection of the contact.



Display a contact form



Displays alls contacts on the map

➤ *Parameters – Component*

which refers to the general parameters of the ContactMap component which are going to apply here only to this form. Either you let the general parameters appear, or you choose to activate or not the function.

➤ *Parameters – System*

where you can modify the display style (CSS) and the Title of the page which is going to appear when the Internet user selects this item of menu.

9. Markers creation

In the markers management, you have at your disposal about fifty markers coming from Google Maps, which can be spotted by their URL (for instance in the form of: http://labs.google.com/ridefinder/images/mm_20_blue.png)

To add markers, you just need to go on / new

Like any markers, it will have a name and a URL.. The URL will be at your convenience. If you choose to put your markers in the repertory of your website, you'll have to download them via a FTP.

Be careful to write as following : `/images/stories/contactmap/linux.png` ... if you click on apply, you can see if the marker is found

Now, when you go to creation place part, the new marker is available.

10. CSS modification

This option is reserved for advanced users. If you don't know the syntax of CSS files, you risk to break ContactMap components display.



Then, to avoid some inconvenience, save this file before any modifications, just in case ...

Anyway, it will be better to refer to specialized documentation for the CSS syntax. We begin the redaction of « [ContactMap for less dummies](#) » for those who want to personalize their presentation.


Elements in Front-end

11. The contact form

Contactmap

Ibrahim ALANGA

président Chlorophylle Niger



Address : rue du kori
City : Ingall
State : Tchirozérine
Country : Niger

Phone : 00227 96 59 55 28
Phone : 00227 94 64 02 59
@ Email : ibrahimalanga@yahoo.fr
Web Site : <http://ingali.free.fr>


Association pour un développement durable (Assainissement, eau, lutte contre la désertification).

Your name :

Your e-mail :

Your subject :

Your message :



Copy the security code.

Title.

Contact name.

Function of the contact.


Coordinates.

Articles icon will appear next to Printing icon.

Description = "message" in the parameters.

Contact form.

Captcha.



Get directions

From : or

To : or

Display of all types of maps.

[MORE...](#) of Wikipedia.



Zoom control (at the top on the left).

Map control (at the bottom on the right).

Scale (at the bottom on the left).

Itinerary.

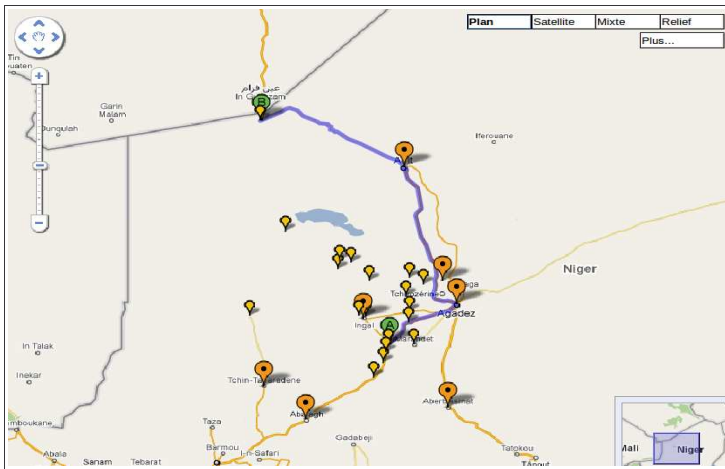
After, send the message! As easy as ABC !



Thank you for your contact.

12. The itinerary

ContactMap allow you to realised roadmap between your contact. This function will be display under the map.



If there is no road leading to your place then a message will warn you that an unknown error occurred...

Tracez votre itinéraire

De : ou

Vers : ou

N25

562 km (environ 9 heures 15 minutes)

1. Prendre la direction nord-est sur N25
Votre destination se trouvera sur la droite

Route inconnue

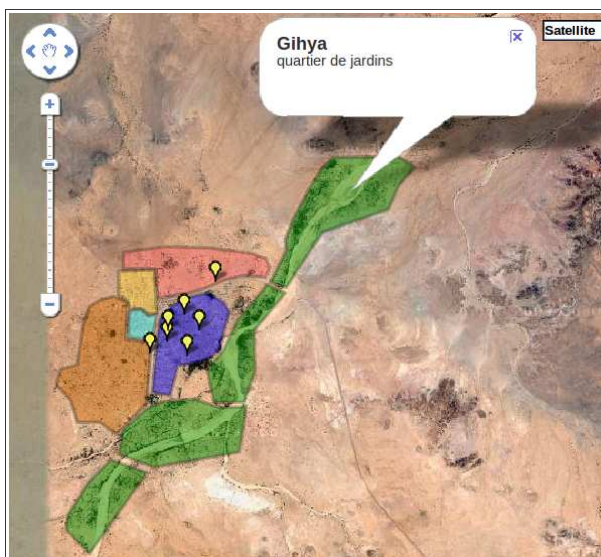
Données cartographiques ©2010 Europa Technologies
Composant GMapFP 6.7 - gmapfp.francejoomla.net

Lists are proposed to see the contacts you have created. You just need to draw your route and then you'll have the itinerary which appears on your map

You'll have the possibility to choose any city or place next to the list boxes or to cross both

13. GeoXml

The GeoXml option allow you to create on your map some polygons, pictures and other cartographic objects. To do so, it will be necessary to have a KML file. We will refer to the GmapFP documentation on method how to create .kml file.



The name and the description of the delineated area will appear in the lightbox with the click on the area (they have to be captured in Google Maps)

The URL is in the form of

ContactMap!3.x for dummies

14. Printing



Icon on the form allow you to print a contact and its description. The printing parameter settings of your page can be modified by CSS.

Ibrahim ALANGA

président Chlorophylle Niger



Adresse : rue du kof
Ville : Ingall
Département : Tchirouéne
Pays : Niger

Téléphone : 00227 96 59 55 28
Téléphone : 00227 94 64 02 59
Email : ibrahimalanga@yahoo.fr
Site Web : <http://ingall.free.fr>

Association pour un développement durable (Assainissement, eau, lutte contre la désertification)

Horaires et tarifs
recoucou



Tracer votre itinéraire

De : Choisir une provenance ou

Vers : Choisir une destination ou

Tracer

Title of the contact

Function

Picture



depend on the seize of your picture, if it's too big and you'll have to print two pages. At least, think to print on both sides of the page!

Coordinates

Description , and Schedules and prices

Map

At this stage, you still can adjust the zooms and the centering of the map!

Itinerary, you'll have the possibility to display a itinerary in text mode.

When you print, the provenance URL and the number of pages appear at the top and the bottom of the page.

Conclusion

This booklet can't answer all the questions you may have.

It's up to you now to use ContactMap! and test it. We only wish that this booklet steer you in the first steps of the process, and do not hesitate to share your experiments, your comments or your suggestions on the forum of the website <http://www.gmapfp.org/> in the relevant section